



LP MOTORCYCLE • SLA BATTERY

# LT4B-5 (12V 2.3Ah)

DIN: 50302

16/06/2023

## Description

The motor battery LT4B-5, 12 volt, 2,3 Ah, is a starter battery with AGM technology. The LT4B-5 is already factory activated (filled and charged) and therefore ready to use at delivery. This lead-acid battery is leak-proof and maintenance free. Can be installed in tilted position up to 90°. The LT4B-5 is a real allrounder and suitable for seasonal use and short distances.

## Performance

Rated Voltage	12
Nominal Capacity	2.3Ah (10hr)
CCA EN	40

## Dimensions / Weight

Dimensions	Length	113 mm
	Width	38 mm
	Container Height	86 mm
	Total Height	86 mm
Net. Weight	0.91 Kg	
Weight acid	0.14 Kg	
Terminal	S	
Layout	4	

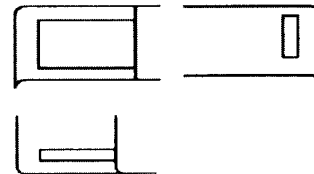
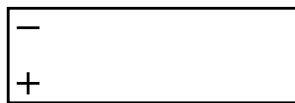


## Features

- Absorbent Glass Mat technology
- Advanced starting power
- Excellent vibration resistant
- 100% maintenance free
- Factory activated, ready to use!

## Layout

## Terminal



(Note) All above information shall be changed without prior notice, Landport Batteries reserves the right to explain and update the latest information.