



LP MOTORCYCLE • GEL BATTERY

LB14L-A2 (12V 14Ah)

DIN: 51498

28/06/2023

Description

The motor battery LB14L-A2, 12 volt, 14 Ah, is a starter battery with gel technology. The LB14L-A2 starter battery is already factory activated (filled and charged) and therefore ready to use. This gel battery is 100% leak-proof and can be installed in tilted position up to 90°. The LB14L-A2 delivers more starting power than a conventional battery and is suitable for the latest motorcycles and powersport vehicles.

Performance

| | |
|------------------|-------------|
| Rated Voltage | 12 |
| Nominal Capacity | 14Ah (10hr) |
| CCA EN | 250 |

Dimensions / Weight

| | | |
|-------------|------------------|--------|
| Dimensions | Length | 134 mm |
| | Width | 89 mm |
| | Container Height | 166 mm |
| | Total Height | 166 mm |
| Net. Weight | 4.4 Kg | |
| Weight acid | 1.58 Kg | |
| Terminal | F | |
| Layout | 0 | |

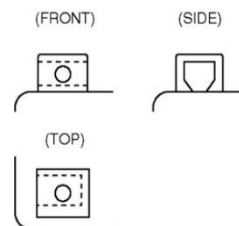
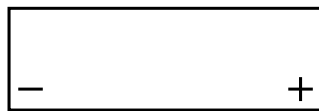


Features

- Gel technology
- Superior starting power
- Superior vibration resistant
- Very low self-discharge
- 100% maintenance free
- Factory activated, ready to use!

Layout

Terminal



(Note) All above information shall be changed without prior notice, Landport Batteries reserves the right to explain and update the latest information.