



LP MOTORCYCLE • GEL BATTERY

LTX14-4 (12V 14Ah)

DIN: 51214

28/06/2023

Description

The motor battery LTX14-4, 12 volt, 14 Ah, is a starter battery with gel technology. The LTX14-4 starter battery is already factory activated (filled and charged) and therefore ready to use. This gel battery is 100% leak-proof and can be installed in tilted position up to 90°. The LTX14-4 delivers more starting power than a conventional battery and is suitable for the latest motorcycles and powersport vehicles.

Performance

Rated Voltage	12
Nominal Capacity	14Ah (10hr)
CCA EN	205

Dimensions / Weight

Dimensions	Length	150 mm
	Width	87 mm
	Container Height	146 mm
	Total Height	145 mm
Net. Weight	4.1 Kg	
Weight acid	1.58 Kg	
Terminal	F	
Layout	1	

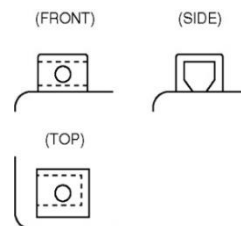
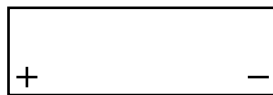


Features

- Gel technology
- Superior starting power
- Superior vibration resistant
- Very low self-discharge
- 100% maintenance free
- Factory activated, ready to use!

Layout

Terminal



(Note) All above information shall be changed without prior notice, Landport Batteries reserves the right to explain and update the latest information.